

ACCESSORIES

for Ceramic standard connectors

Bushing insert (Grind off for correct fitting)

Material	:	brass
Thermocouple ϕ	:	1,0 thru 6,4 mm
Ordering code	ϕ 1,0 mm	: CNN19510
	ϕ 1,6 mm	: CNN19516
	ϕ 3,2 mm	: CNN19532
	ϕ 4,8 mm	: CNN19548
	ϕ 6,6 mm	: CNN19564
	blind	: CNN19500

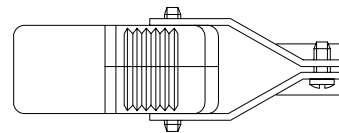
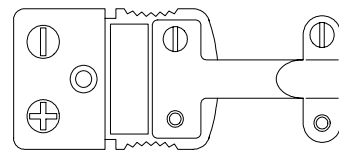


IMPORTANT NOTICE:
Rework required before
mounting.

Wire clamp bracket

Material	:	stainless steel
Min. cable diameter	:	4,8 mm

Ordering code : CNN59100

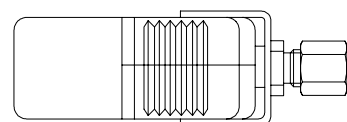
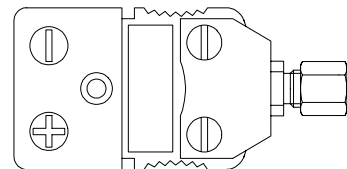


T/c mounting bracket

Material	:	stainless steel
Thermocouple	:	MI-cable mineral insulated, ϕ 1,6 thru 6,4 mm

Ordering code

ϕ 1,6 mm	: CNN59316
ϕ 3,2 mm	: CNN59332
ϕ 4,8 mm	: CNN59348
ϕ 6,4 mm	: CNN59364



Thermo Electric
P.O. Box 179
2740 AD Waddinxveen
The Netherlands

Tel. : +31 (0)182 – 302 850
Fax : +31 (0)182 – 302 777
E-mail : info@thermo-electric.nl
Internet : <http://www.thermo-electric.nl>

I/114r
Rev.00 08/03