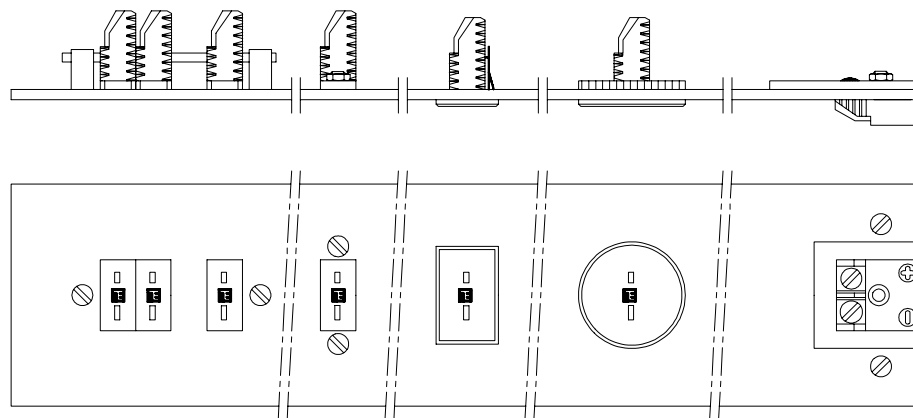


MINIATURE PANEL INSERTS

with thermocouple material contacts



Features:

- Available in various colour codings
- Easy access to contact screws
- Contact screws secured in brass bushings
- Various mounting methods, side to side or individually

Applications:

- Panel mount sensor interface
- PCB mounting
- Instruments i/o
- Customized panel configuration

Specifications:

Body material	:	tough, self extinguishing thermoplastic compound with low moisture absorption rate and high dielectric strength
Contacts	:	thermocouple material with screw type terminals, spring loaded and polarized
Maximum temperature rating	:	200°C
Conductor diameter	:	min. 0,12 mm; max. 0,6mm
Panel thickness	:	2,3 mm typical
Identification	:	plus sign moulded in body and front, colour coded to IEC extension wire code, other colour coding such as IEC, DIN and JIS are also available
Mating connector	:	standard Thermo Electric's miniature flat pin plug (see datasheet I/120), in

Ordering code:

	:	accordance with European standardization proposal
Ready made panel	:	see separate datasheets for a complete range of standard panels as well for extended temperature ratings

Thermocouple type	Code	IEC	Code	ANSI
Iron-constantan	J BK	black	J BK	black
Chromel-alumel	K GR	green	K YL	yellow
Copper-constantan	K BR	brown	T BL	blue
PtRh-Pt	S OR	orange	S GR	green
Chromel-constantan	E PL	violet	E PL	violet
Copper-copper	B GY	grey	B WH	white
Nicrosil-nisil	N PK	pink	N OR	orange



Thermo Electric
P.O. Box 179
2740 AD Waddinxveen
The Netherlands

Tel. : +31 (0)182 – 302 850
Fax : +31 (0)182 – 302 777
E-mail : info@thermo-electric.nl
Internet : http://www.thermo-electric.nl

I/340
Rev.00 08/03