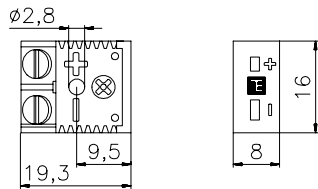


MINIATURE PANEL INSERTS

with thermocouple material contacts

Version:

Basic



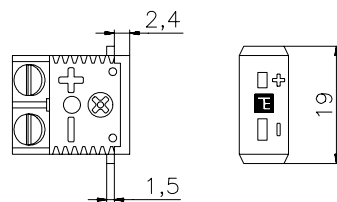
Panel cut-out:

Basic version can be integrated in instrument housings and for Printed Circuit Board mounting by means of only one fixing screw

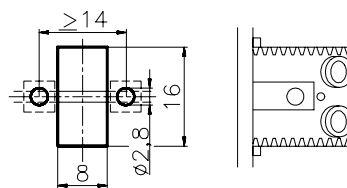
Ordering code:

PIM-22110-JX
PIM-22210-KX
PIM-22310-TX
PIM-22410-SX/RX
PIM-22510-EX
PIM-22610-Cu/Cu
PIM-22710-NX

Rectangular hole, rod mounting

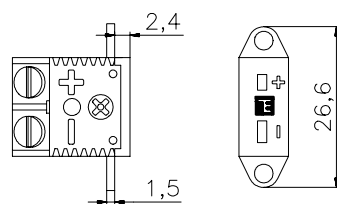


Option 1 + 4

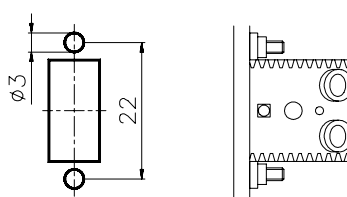


PIM-22120-JX
PIM-22220-KX
PIM-22320-TX
PIM-22420-SX/RX
PIM-22520-EX
PIM-22620-Cu/Cu
PIM-22720-NX

Rectangular hole, rear mounting

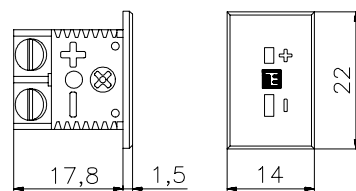


Option 4

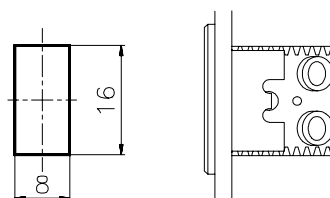


PIM-22130-JX
PIM-22230-KX
PIM-22330-TX
PIM-22430-SX/RX
PIM-22530-EX
PIM-22630-Cu/Cu
PIM-22730-NX

Rectangular hole, rear mounting

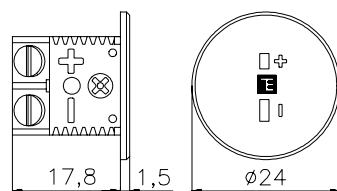


Option 2, 3 + 4

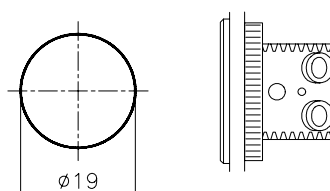


PIM-22140-JX
PIM-22240-KX
PIM-22340-TX
PIM-22440-SX/RX
PIM-22540-EX
PIM-22640-Cu/Cu
PIM-22740-NX

Round hole, rear mounting



Option 2, 3 + 4



PIM-22150-JX
PIM-22250-KX
PIM-22350-TX
PIM-22450-SX/RX
PIM-22550-EX
PIM-22650-Cu/Cu
PIM-22750-NX

Options:

1. Set of one mounting rod with 2 spacers and fixing screwsPIM-29001
2. Round aluminium nut (M 18 x 1,5 mm)PIM-29002
3. Stainless steel spring for rectangular hole mounting for 2,3 mm panel thickness¹ PIM-29003-1
4. Thermo Electric aluminium front panels including cut-outsto customer specification

¹ Other panel thickness i.e. 1,5, 2,0 or 2,5 mm on request

Ordering code: