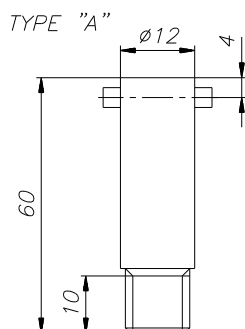


MOUNTING ADAPTERS

for spring loaded sensors



Specifications:

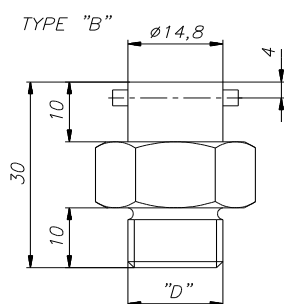
Type 'A'	:	slothead adapter for 6 mm; probe diameter; spring loaded sensors
Material	:	chrome plated steel
Bore	:	8,4 mm
Mounting thread 'D'	:	M 10 x 1; other threads optional
Surface clearance	:	40 mm

Mounting thread 'D'

M 10 x 1

Ordering code

MTS-94002



Specifications:

Type 'B'	:	hexhead adapter for 8 mm; probe diameter; spring loaded sensors
Material	:	chrome plated steel
Bore	:	9 mm
Hex size	:	17 mm
Mounting thread 'D'	:	M 12 x 1, M 14 x 1,5, R 3/8" or R 1/4" other threads optional
Surface clearance	:	10 mm

Mounting thread 'D'

M 12 x 1
M 14 x 1,5
R 3/8"
R 1/4"

Ordering code

MTS-94015
MTS-94017
MTS-94018
MTS-94019