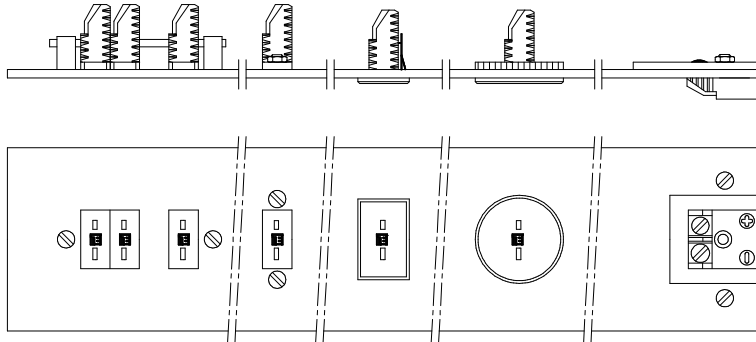


# MINIATURE PANEL INSERTS

## with thermocouple material contacts



### Features:

- Available in various colour codings
- Easy access to contact screws
- Contact screws secured in brass bushings
- Various mounting methods, side to side or individually

### Applications:

- Panel mount sensor interface
- PCB mounting
- Instruments i/o
- Customized panel configuration

### Specifications:

Body material	:	tough, self-extinguishing thermoplastic compound with low moisture absorption rate and high dielectric strength
Contacts	:	thermocouple material with screw type terminals, spring loaded and polarized
Maximum temperature rating	:	200 °C
Conductor diameter	:	min. 0,12 mm; max. 0,6mm
Panel thickness	:	2,3 mm typical
Identification	:	plus sign moulded in body and front, colour coded to IEC extension wire code, other colour coding such as IEC, DIN and JIS are also available
Mating connector	:	standard Thermo Electric's miniature flat pin plug (see datasheet I/120), in accordance with European standardization proposal
Ready-made panel	:	see separate datasheets for a complete range of standard panels as well for extended temperature ratings

### Ordering code:

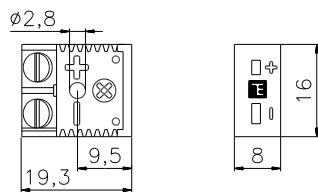
Thermocouple type	Code	IEC	Code	ANSI
Iron-constantan	J BK	black	J BK	black
Chromel-alumel	K GR	green	K YL	yellow
Copper-constantan	K BR	brown	T BL	blue
PtRh-Pt	S OR	orange	S GR	green
Chromel-constantan	E PL	violet	E PL	violet
Copper-copper	B GY	grey	B WH	white
Nicrosil-nisil	N PK	pink	N OR	orange

# MINIATURE PANEL INSERTS

with thermocouple material contacts

## Version:

Basic



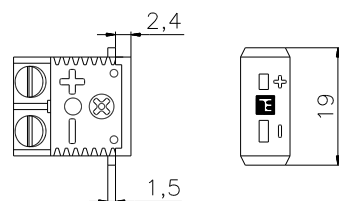
## Panel cut-out:

Basic version can be integrated in instrument housings and for Printed Circuit Board mounting by means of only one fixing screw

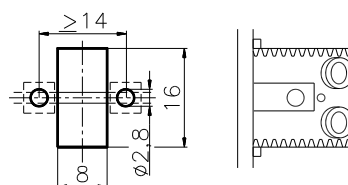
## Ordering code:

PIM-22110-JX  
PIM-22210-KX  
PIM-22310-TX  
PIM-22410-SX/RX  
PIM-22510-EX  
PIM-22610-Cu/Cu  
PIM-22710-NX

## Rectangular hole, rod mounting

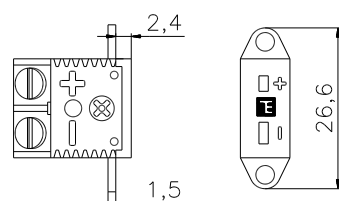


## Option 1 + 4

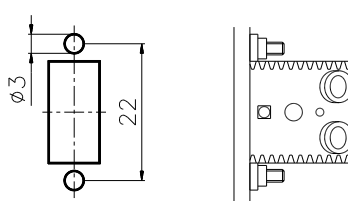


PIM-22120-JX  
PIM-22220-KX  
PIM-22320-TX  
PIM-22420-SX/RX  
PIM-22520-EX  
PIM-22620-Cu/Cu  
PIM-22720-NX

## Rectangular hole, rear mounting

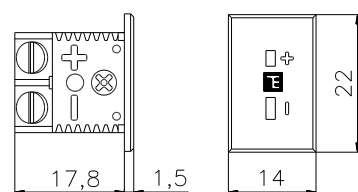


## Option 4

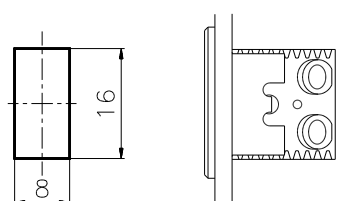


PIM-22130-JX  
PIM-22230-KX  
PIM-22330-TX  
PIM-22430-SX/RX  
PIM-22530-EX  
PIM-22630-Cu/Cu  
PIM-22730-NX

## Rectangular hole, rear mounting

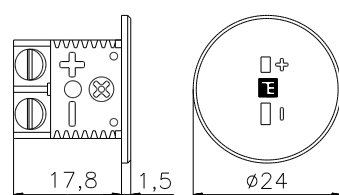


## Option 2, 3 + 4

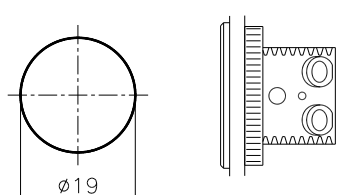


PIM-22140-JX  
PIM-22240-KX  
PIM-22340-TX  
PIM-22440-SX/RX  
PIM-22540-EX  
PIM-22640-Cu/Cu  
PIM-22740-NX

## Round hole, rear mounting



## Option 2, 3 + 4



PIM-22150-JX  
PIM-22250-KX  
PIM-22350-TX  
PIM-22450-SX/RX  
PIM-22550-EX  
PIM-22650-Cu/Cu  
PIM-22750-NX

## Options:

1. Set of one mounting rod with 2 spacers and fixing screws ..... PIM-29001
2. Round aluminium nut (M 18 x 1,5 mm) ..... PIM-29002
3. Stainless steel spring for rectangular hole mounting for 2,3 mm panel thickness<sup>1</sup> ..... PIM-29003-1
4. Thermo Electric aluminium front panels including cut-outs ..... to customer specification

<sup>1</sup> Other panel thickness i.e. 1,5, 2,0 or 2,5 mm on request

## Ordering code: